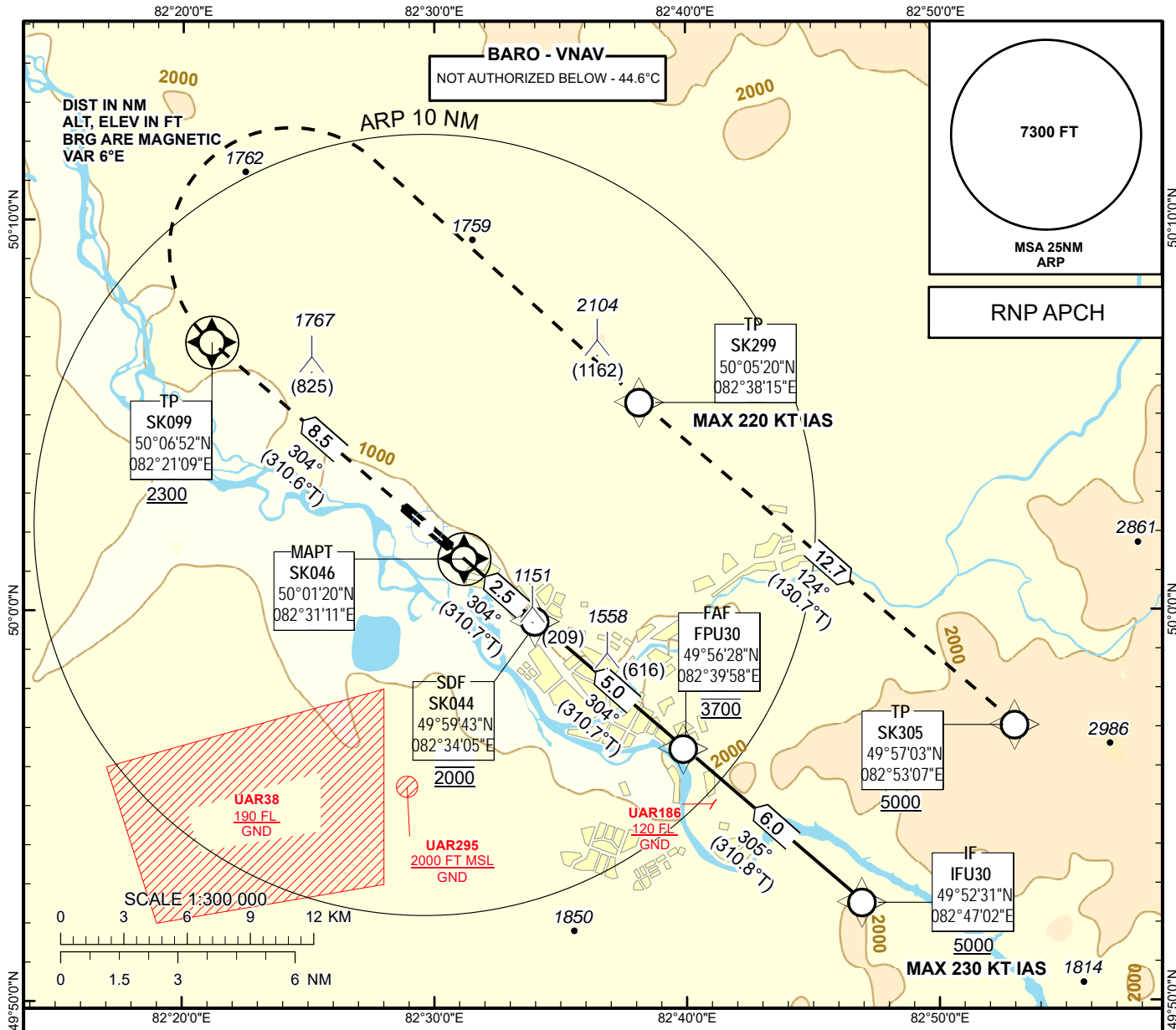


INSTRUMENT  
APPROACH  
CHART - ICAO

AERODROME ELEV **942FT**  
HEIGHTS RELATED TO  
AD ELEV

UST-KAMENOGORSK TOWER 130.1  
UST-KAMENOGORSK ATIS (EN) 124.2  
UST-KAMENOGORSK ATIS (RU) 127.7

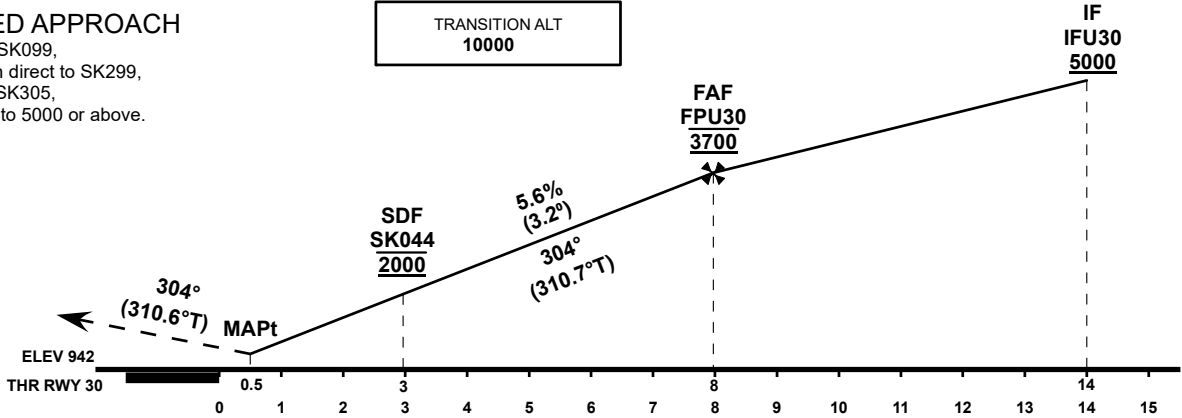
UST-KAMENOGORSK  
RNP RWY 30



MISSED APPROACH

Climb to SK099,  
Right turn direct to SK299,  
Track to SK305,  
Climbing to 5000 or above.

TRANSITION ALT  
**10000**



| OCA(OCH) |           | A         | B         | C         | D         |
|----------|-----------|-----------|-----------|-----------|-----------|
| Straight | LNAV      | 1350(410) |           |           |           |
|          | LNAV/VNAV | 1240(298) | 1250(308) | 1270(328) | 1300(358) |

| GS              | Kt      | 70    | 90    | 120   | 150   | 180   |
|-----------------|---------|-------|-------|-------|-------|-------|
| Rate of descent | ft/min  | 395   | 510   | 680   | 850   | 1020  |
| FAF-MAPt 7.5 NM | min:sec | 06:26 | 05:00 | 03:45 | 03:00 | 02:30 |

CHANGE: Renumbered, editorial.

TABULAR DESCRIPTION

| UASK RNP RWY30 |                 |                     |            |               |                       |             |                |             |          |         |                          |
|----------------|-----------------|---------------------|------------|---------------|-----------------------|-------------|----------------|-------------|----------|---------|--------------------------|
| Serial Number  | Path Descriptor | Waypoint Identifier | Fly - over | Course °M(°T) | Magnetic Variation(°) | Distance NM | Turn Direction | Altitude FT | Speed KT | VPA (°) | Navigation Specification |
| 10             | IF              | IFU30               | -          | -             | +6.3                  | -           | -              | +5000       | -230     | -       | RNP APCH                 |
| 20             | TF              | FPU30               | -          | 305(310.8)    | +6.3                  | 6.0         | -              | @3700       | -        | -       | RNP APCH                 |
| 30             | TF              | SK044               | -          | 304(310.7)    | +6.3                  | 5.0         | -              | @2000       | -        | -3.2    | RNP APCH                 |
| 40             | TF              | SK046               | Y          | 304(310.7)    | +6.3                  | 2.5         | -              | @1162       | -        | -3.2    | RNP APCH                 |
| 50             | CF              | SK099               | Y          | 304(310.6)    | +6.3                  | 8.5         | -              | +2300       | -        | 1.4     | RNP APCH                 |
| 60             | DF              | SK299               | -          | -             | +6.3                  | 19.2        | R              | -           | -220     | 1.4     | RNP APCH                 |
| 70             | TF              | SK305               | -          | 124(130.7)    | +6.3                  | 12.7        | -              | +5000       | -        | 1.4     | RNAV 1                   |

WAYPOINT LIST

| UASK RNP RWY30      |  |             |             |
|---------------------|--|-------------|-------------|
|                     |  |             |             |
| Waypoint Identifier |  | Coordinates |             |
| IFU30               |  | 495231.44N  | 0824702.13E |
| FPU30               |  | 495627.72N  | 0823958.10E |
| SK044               |  | 495943.44N  | 0823405.38E |
| SK046               |  | 500119.69N  | 0823111.43E |
| SK099               |  | 500651.68N  | 0822109.32E |
| SK299               |  | 500519.69N  | 0823814.69E |
| SK305               |  | 495703.40N  | 0825306.58E |